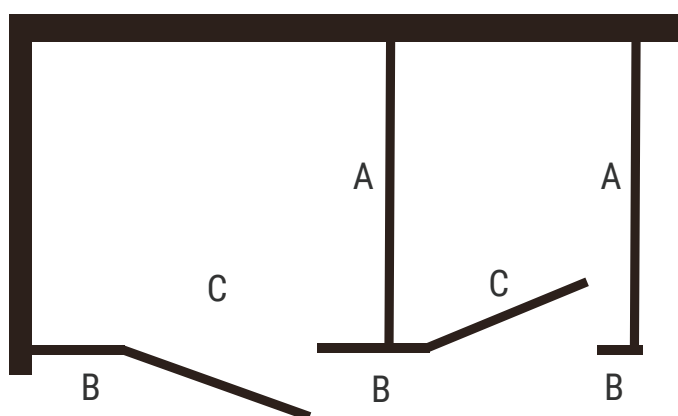


Measuring your

Toilet Compartment Layout



Partition Component Reference Guide

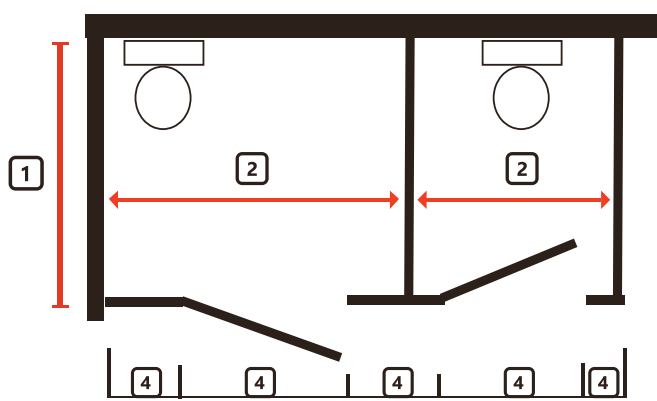


A - PANEL: Choose an overall depth and subtract 2.5" to allow for pilaster and hardware gaps.
B - PILASTERS: Support the panels and are needed to hang and latch doors.
C - DOORS: 24" doors are used for stalls 32" to 40" wide; 36" doors are used for ADA stalls

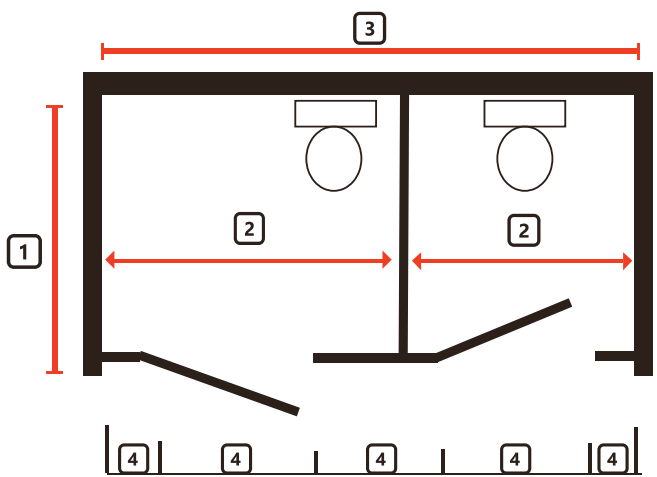
Lets Get Started:

This first thing is to sketch out the "real walls". Wall lines should be indicated using thicker lines as seen in the drawings below. Once the "real walls" have been sketched determine the location of the toilet. If this is a replacement order you may skip this step and measure existing components unless you need to update the layout to meet ADA Requirements. Now that the toilet locations have been determined, you will be able to sketch out your components

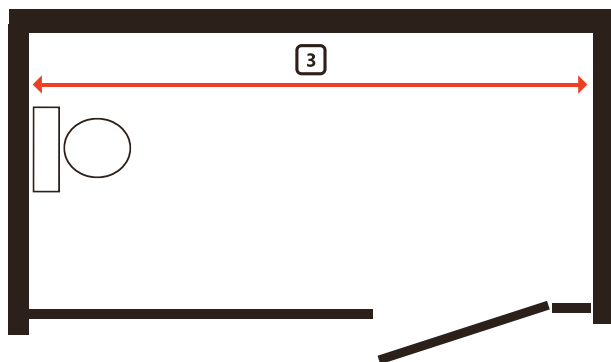
Measuring for an "IN CORNER" Layout



Measuring for a "BETWEEN WALL" Layout



Measuring for an "ALCOVE" Layout



1. Compartment Depth

Measure from the back wall of the compartment to the outside face of the pilaster. Compartments less than 54" will require an out-swing door.

2. Compartment Width

Handicapped compartments need to be 60" wide x 59" deep (Clear inside compartment measurement). The center line of the toilet location in the handicap compartment must be 18" from one side of the compartment.

3. Wall to Wall Dimension

When measuring the distance between walls it is important to find the tightest measurement. This includes measuring between half-wall time, wainscoting and base molding. Hardware Brackets can accommodate gaps of 1/2" to 1 1/4". Standard gap at the wall is 1".

4. Component Measurements

Layout begins from the side wall. Start with the 1st hardware gap (1"), Then your 1st PILASTER. If this an ADA compartment the door opening must be diagonal from the toilet. Federal law requires a door opening within 4" (3" PILASTER with a 1" Gap) off the wall or panel depending on toilet location.

Your next dimension will be the door opening (PILASTER to PILASTER). If this is a Handicap compartment, a 36" Door is required. Continue measuring in this fashion, trying to center the door in the standard compartments.

NOTE: Please confirm all ADA requirements for your state.

Sanimerica International is devoted to providing the best quality restroom partitions, restroom accessories, water saving faucets and other commercial restroom specialty products.



SANIMERICA

PO Box 35348 • Boston, MA 02135 Tel: 617-314-9454 • FAX: 617-314-9454
Website: www.sanimerica.com • E-mail: sales@sanimerica.com